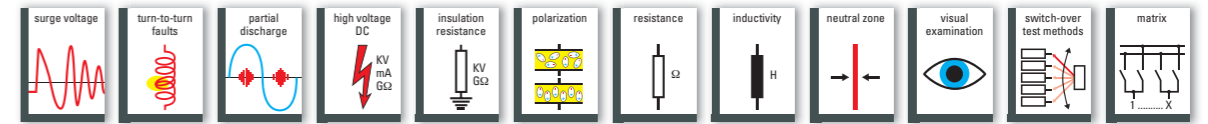


Universal winding testers



- RS232
- USB
- Ethernet
- I/O
- SPS
- Print



Backpack suitable for the MTC2-5KV light with measurement case



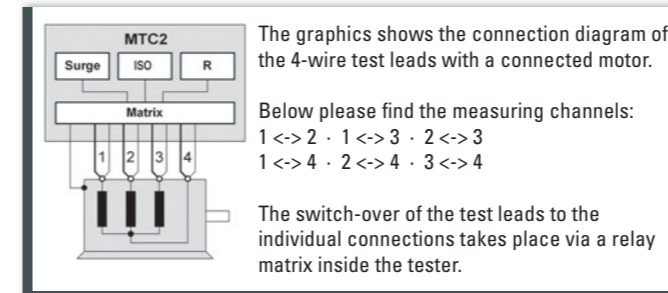
MTC2-5KV light in a measurement case suitable as hand luggage



MTC2-15KV in mobile caddy



MTC2-15KV as 19"-rack



Highlights

- digital surge test with patented evaluation
- surge test with 100nF/200nF (depending on the device) and up to 1500A surge current
- partial-discharge analysis for detecting special insulation faults
- resistance test in 4-wire configuration with temperature compensation
- insulation-resistance test with automatic PI test
- optimized for maintenance
- four winding connections (3 winding leads + star point) plus frame connection
- automatic testing with go / no go comparison
- integrated armature-testing wizard and automatic armature adapter
- compact and lightweight MTC2-light – suitable to be taken as luggage on air travel
- remote control of an AC high-voltage tester and reading in of the test results
- integrated PC with Windows XP® or Windows 7®
- easy operation via touch screen or mouse and keyboard
- remote control and remote calibration
- database for a great amount of test programs and test results
- storing of test results with the motor name plate data and surge curves

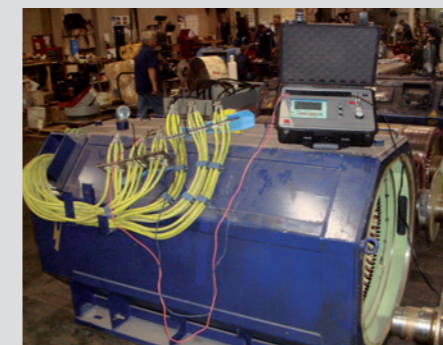
Our testers of the MTC2 line are, for example, used for testing 3-phase stators, single-phase stators, transformers, armatures or motors. MTC2 devices can also control armature-contacting units made by SCHLEICH – unique in the world. This allows a fully-automatic armature test and saves hours of work!

For evaluating the errors, the individual tests are compared to each other or, alternatively, to a reference curve.

In addition to manual tests, it is, of course, possible to run automatic test processes. Test processes and test results are stored in the integrated Access® database.

In addition to the test results, the name-plate data of the motors is stored, as well. With the name-plate data, the test results can be searched for in the database and printed out. In addition, it is possible to compare the test results of old tests automatically to new test results easily. The tester, therefore, allows an evaluation of the condition of the stator / motor and indicates a possible deterioration of the insulation.

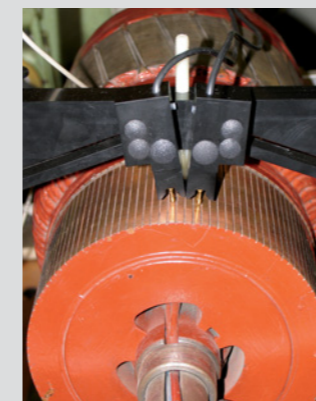
The software allows an operation of the testers in WINDOWS® networks. The Ethernet interface belongs to the standard delivery extent of the tester.



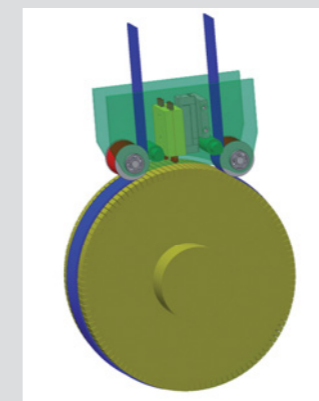
MTC2 light on a wind-power generator



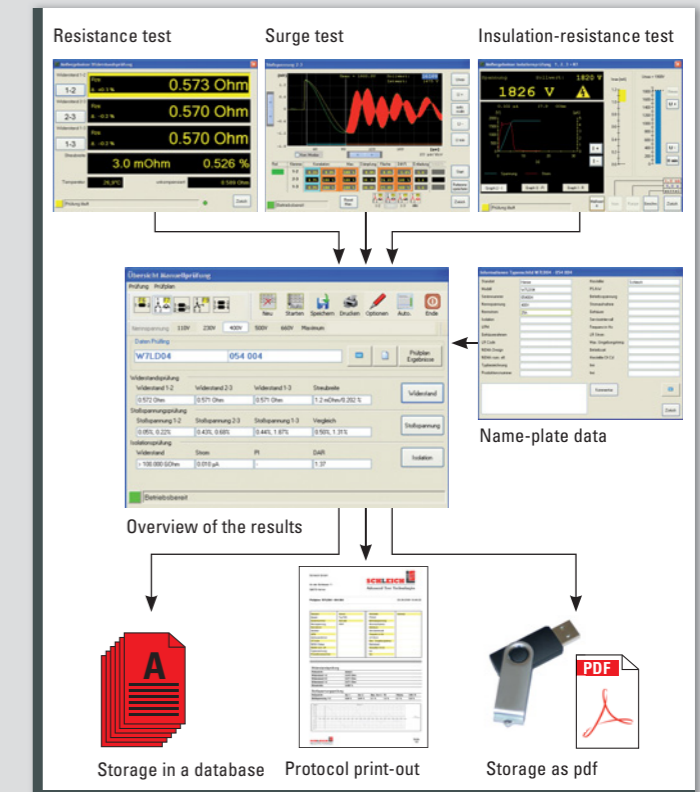
Armature test



Manual armature test probe



Armature adapter that moves around the collector automatically



Refer to:

Bonding machines	56
Windows® software	62
Windows® networks	64
HV pistols and warning lamps	68
Rolling tables	78
Calibration and black boxes	82
Winding machines	84
Test methods	94

