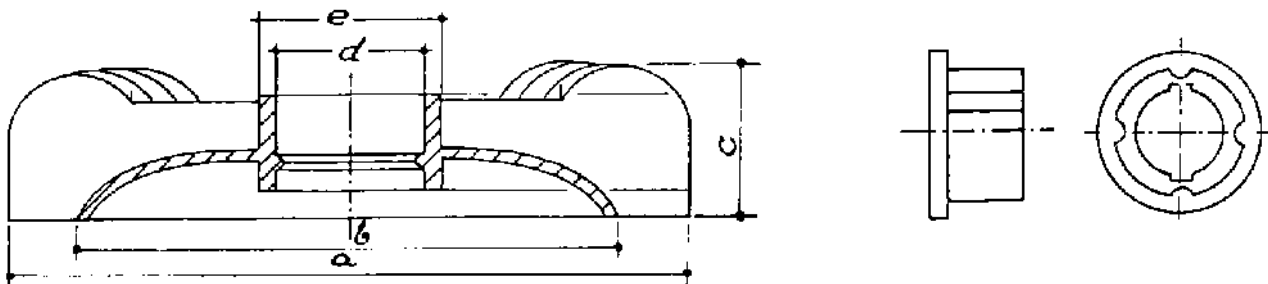


BF - PLASTIC FANS



BF –fans are suitable for repairing or manufacturing motors with frame size IEC 71...180. In electric motor the shaft is nonstandard and therefore it is hard to find well-fitting fan. BF fans are easy to adjust on almost any shaft. This is based on separate fitting sleeve that can be pushed on fans hole. Sleeve itself is easy to work on any needed measurement.



Type	Model no.	a	b	c	d	e
BF71	BF10	121	101	26	28	33
BF 80	BF20	132	108	26	28	33
BF 90	BF30	167	136	33	43	49
BF 100	BF40	171	150	37	43	49
BF 112	BF50	216	179	46	56,5	63
BF 132	BF60	246	201	56	56,5	63
BF 160	BF70	298	249	56	69	75
BF 180	BF80	333	280	56	69	75

SLEEVES

Type	Model	Ready hole / [mm]						
BF 71 BF 80	BF10 BF20	”0” (5)	14	16	19	20	22	
BF 90 BF 100	BF30 BF40	”0” (18)	24	25	30			
BF 112 BF 132	BF50 BF60	”0” (20)	28	30	32	38	40	45
BF 160 BF 180	BF70 BF80	”0” (30)	42	45	50			



spare parts



Fans EZE-Fan, aluminium flat style

advantage:

fast and easy shaft mounting

allows for removal and replacement without damage to the fan

low profile designs fits almost all motor types



Aluminium fans

Aluminium bushes

			Article-No: AF 71-80/diameter			
∅	Height	Seipp-No.	0 mm	14 mm	15 mm	16 mm
124 mm	23 mm	AF 71	18 mm	19 mm	20 mm	22 mm
132 mm		AF 80	Maximum Hub bores of these bushes = 25 mm Minimum outside diameter of fan AF 71/80 = 102 mm			
			Article-No: AF 90-100/diameter			
∅	Height	Seipp-No.	24 mm	25 mm	30 mm	0 mm
166 mm	27 mm	AF 90	Maximum Hub bores of these bushes = 38 mm Minimum outside diameter of fan AF 90 = 140 mm			
170 mm		AF 100	Minimum outside diameter of fan AF 100 = 147 mm			
			Article-No: AF 112-132/diameter			
∅	Height	Seipp-No.	28 mm	30 mm	32 mm	0 mm
216 mm	37 mm	AF 112	40 mm	45 mm	0 mm	
246 mm		AF 132	Maximum Hub bores of these bushes = 60 mm Minimum outside diameter of fan AF 112 = 175 mm Minimum outside diameter of fan AF 132 = 202 mm			
			Article-No: AF 160-180/diameter			
∅	Height	Seipp-No.	42 mm	45 mm	50 mm	0 mm
298 mm	44 mm	AF 160	Maximum Hub bores of these bushes = 65 mm Minimum outside diameter of fan AF 160 = 243 mm			
333 mm		AF 180	Minimum outside diameter of fan AF 180 = 270 mm			
			Article-No: AF 200-225/0			
∅	Height	Seipp-No.	0 mm			
355 mm	50 mm	AF 200	Maximum Hub bores of these bushes = 95 mm Minimum outside diameter of fan AF 200 = 293 mm			
381 mm		AF 225	Minimum outside diameter of fan AF 225 = 293 mm			
406 mm		AF 250	Minimum outside diameter of fan AF 250 = 293 mm			
431 mm		AF 280	Minimum outside diameter of fan AF 280 = 293 mm			